

## CASE STUDY



18th International Input-Output Conference  
20-25 June 2010 • Sydney Australia

## 18th International Input-Output Conference

UNIVERSITY OF SYDNEY, NSW

200 INTERNATIONAL DELEGATES FROM OVER 25 COUNTRIES



### OBJECTIVE

To plan, organise, fund and manage The 18th International Input-Output Conference taking place in Sydney, 20-25 June 2010 with 200 delegates in attendance from over 25 International countries. The Conference theme was Re-thinking economic growth towards sustainability and wellbeing. The conference will assist businesses in calculating their own greenhouse gas emissions; they will need to understand how to use input-output models to calculate not only their emissions but also their carbon offsets. Furthermore providing a wider understanding of what input-output analysis is and what it can do.

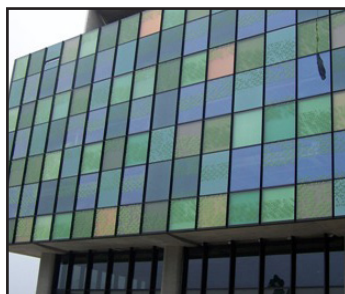
### DELIVERY

This event took 8 months to organise and The Events Authority worked alongside The School of Physics at The University of Sydney in setting up a complex registration process, communication and logistics plan including accommodation, touring, flights and pre & post extension packages. In addition a full social programme with multiple workshop sessions and an international array of speakers. The theme reflected a major challenge of our time: how to avert dangerous environmental change while being able to ensure the wellbeing of the world's people.

### TESTIMONIAL

*"organising a conference with a tight budget, complex registration and cancellation fee schedule, and complicated communication with delegates from all over the world seemed a daunting if not overwhelming task. This was all the more worrying since my reputation and the reputation of my employer – the University of Sydney – are tied to the success of this conference. Luckily, with Shelly and The Events Authority now being thoroughly in control of procedures, I can relax and leave the conference organisation in safe hands. She caters for all eventualities and special cases, she is extremely effective and reliable, she is accurate and on time in all financial matters, and most importantly, she is pro-active in suggesting and implementing event procedures that none of our University staff had thought about"*

**Manfred Lenzen, Chair of Sustainability Research,**  
The University of Sydney



*You want an extraordinary event... we know.*